



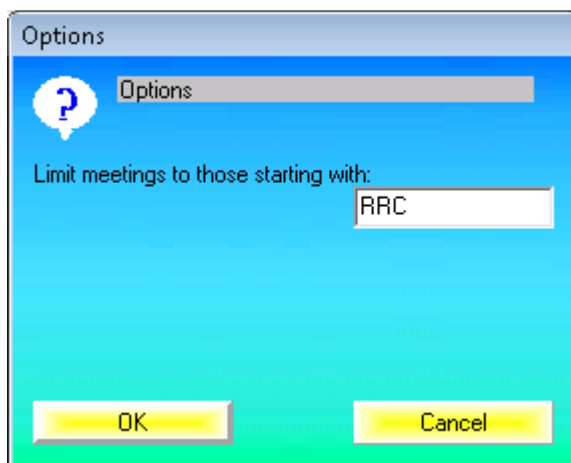
How to use the Online Entry program



Download the file from www.alycat.com/DriverEntries

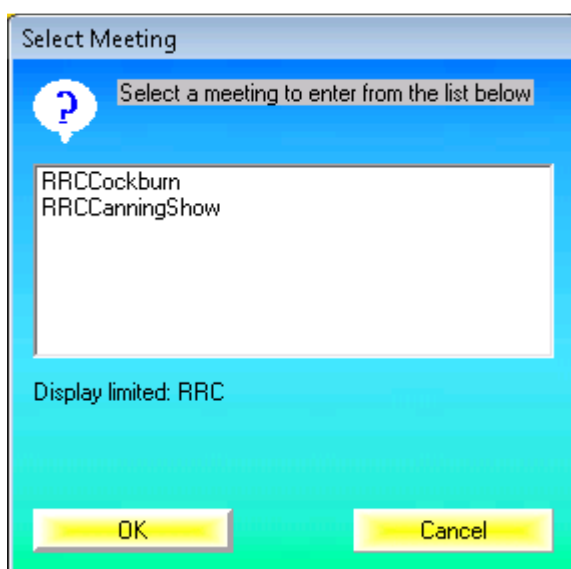
You can save the file anywhere you like, there is no 'install'. Just double-click the downloaded file to run it, or create a windows shortcut to it.

The first time you run it, at the main screen select Options, enter RRC as follows, then click the OK button:



To Enter a Meeting and Create your Profile/s

Adding or editing your profile/s and entering a meeting are both done through the same screen. At the main screen, select 'Enter Meeting' and you will then be shown a list of all available RRC meetings you can enter. Select the appropriate one, and click the OK button:



The following screen allows you to add, edit and delete your own profiles – for example you would have one profile with all your buggy details, and another profile with all your truggy details.

This section shows the race location and date. **Ensure you are entering the correct race.**

Select, create, delete or rename a profile here.

Add your details here for the profile selected.

Skill level is 1 (I've never raced before) to 10 (Australian National Champ contender!).

Select your radio freq. and add your 7 digit transponder number.

Ensure you have the correct class selected before entering the meeting.

To delete an incorrect race entry, select the matching profile and click 'Delete Previous'.

You can check your race entry or see who else has registered at any time. Back at the main screen, select 'List of Entries' to see the current list:

Class	Driver Name	Driver Details	Freq #1	Freq #2	Freq #3	Club
Buggy	Adrian Stefan		2.4Ghz Oper			
Buggy	ALICIA PLACE		2.4Ghz Oper			RRC
Buggy	Brandon Godfrey		2.4Ghz Oper			RRC
Buggy	Brayden Bradshaw	Mugen MBXSR/Goteck 21	2.4Ghz Oper			RRC
Buggy	Brendan Flegg		2.4Ghz Oper			Radi
Buggy	Brent Thomas	Mugen MBX6	2.4Ghz Oper			RRC
Buggy	Bryce Standley	Mugen MBXSR OS VSPEC 21	2.4Ghz Oper			RRC
Buggy	Cougar Smits		2.4Ghz Oper			Radi

Class	Num Entries
Buggy	39
Truggy	24
Total	63

How to change the main screen picture:

You can add your own picture to the main screen. Rename the picture you want to use to OnlineEntriesDrivers.jpg and place it in the same folder location as your online entry program (OnlineEntriesDrivers.exe).

For example: if your program is on your desktop, copy your picture to the desktop, and rename it as above. Next time you start the program you should see your own picture.